

WIRAND FIBRE CONVEYOR TRAILER

VISUAL INSPECTION CONDITION REPORT

Customer : _____

CHECK : **OUT** Date : _____ **IN** Date : _____

STORE LOCATION : _____

Item	Number of items	Item name	Checked OUT	Checked IN	Remarks
1	1	Conveyor Trailer			
2	1	Electrical Cord			
3	2	Locks			

Dear Customer :

- **On receipt of this equipment, please check all equipment has been received, ensure your site staff read and understand the operating, maintenance and safety information, and use the equipment in a safe manner.**
- **Responsibility for safe operation of the equipment, and safety of your staff is to your care.**
- **At the conclusion of the use of the equipment, please clean the equipment, repack it for transportation and return to Maccaferri.**
- **Please advise if there are any missing parts. All equipment usage to be in accordance with Maccaferri's Hire Agreement. You will be charged for any damaged or missing components.**

WIRAND FIBRE CONVEYOR **TRAILER**

WARNING!

Any alterations to this hire equipment may prove dangerous to the operator and will be in breach of the Equipment Hire Agreement

**Service must be performed only by an authorised Maccaferri service organisation.
Please contact Maccaferri (0800 60 60 20) for return of this equipment for servicing if it is found to be faulty.**

***This documentation is also available on our website*
*www.maccaferri.co.nz***

WIRAND FIBRE CONVEYOR TRAILER



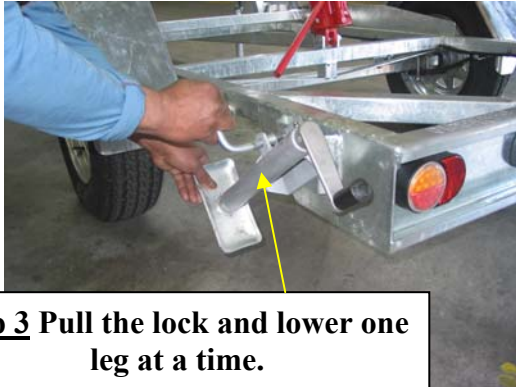
Step 1 Trailer lock :
Please reattach it to the trailer after the trailer was delivered to site and taken off the truck.

Setp 2 Security lock.
When on site, unlock the security lock, push the metal bar into the wheel to lock it and reattach the lock.



IMPORTANT SECURITY MEASURE : Unlock the security lock between the wheels, shift the metal bar into one of the holes in the wheel (you might need to manually move the trailer until the bar slides through). Lock the security lock.

STABILISING THE TRAILER BEFORE STARTING



Step 3 Pull the lock and lower one leg at a time.



Step 5 Wind down the extendable legs until it reaches the ground

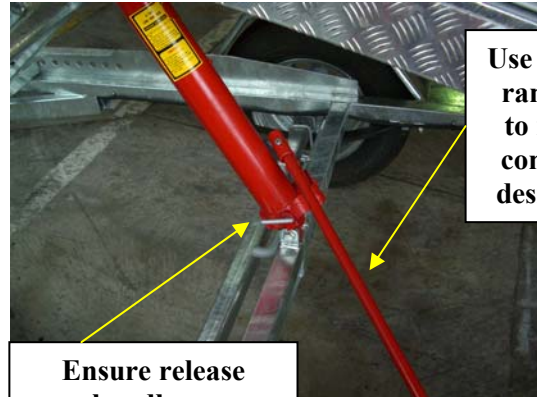


Wind down all 4 support legs until conveyor level and balanced

LIFT / LOWER THE CONVEYOR BELT

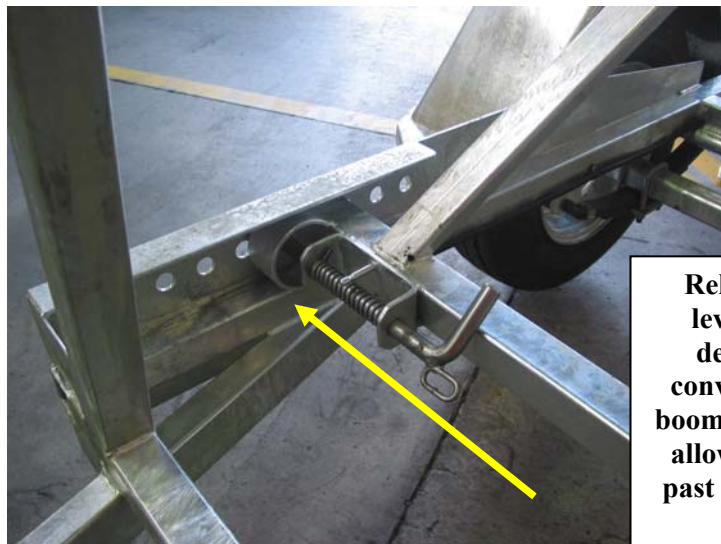


Release 2 spring tension levers on A frame



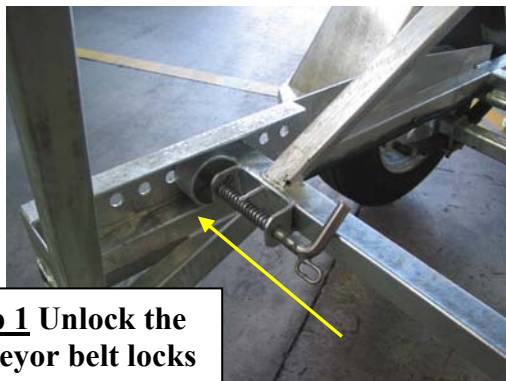
Use hydraulic ram handle to raise the conveyor to desired level

Ensure release handle on hydraulic ram tight



Release 2 spring tension levers on A frame, into desired hole on side of conveyor structure to lock boom safely in place. Do not allow spring levers to pass past the 9th rear hole on the conveyor.

When you finish, before moving the trailer again, lower the conveyor belt to the original position. For that you will need to:

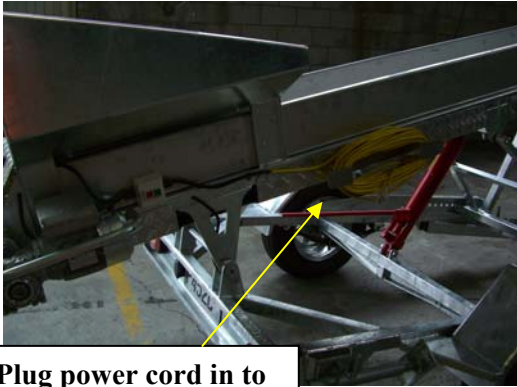


Step 1 Unlock the conveyor belt locks on both sides.

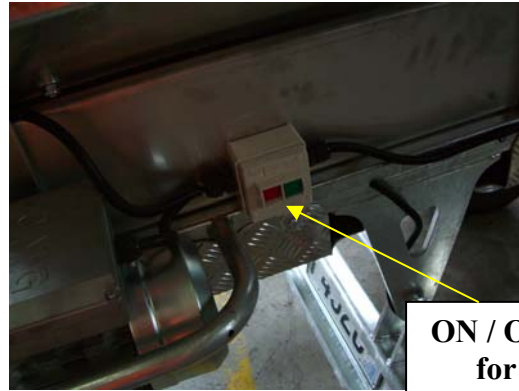


Step 2 Slowly release the hydraulic ram handle to lower the conveyor belt.

TO OPERATE CONVEYOR BELT



Plug power cord in to secure single phase power source

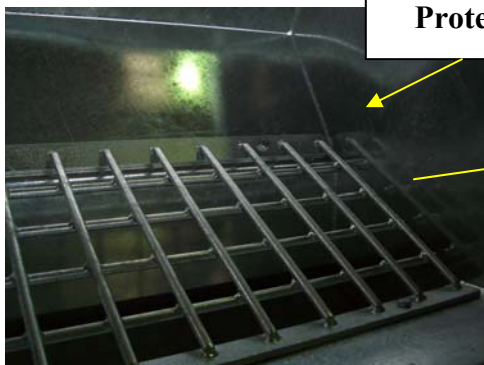


ON / OFF Button for normal operation

EMERGENCY STOP



In case of emergency, push the red button. This button must only be used in emergencies. To release it, turn it to the right and it will pop out again. DO NOT USE IT AS A NORMAL OPERATION STOP BUTTON.



Protective bars.



USER INSTRUCTIONS

BEFORE YOU START

- Ensure the driver has a current vehicle licence for towing the trailer.
- Ensure personal protective equipment (PPE) is used by the operator including protective glasses, gloves, ear muffs.

TRANSPORTATION

- Remove lock from wheel padlock by removing pad lock and sliding steel lock back into trailer, reinstall pad lock to prevent theft of the trailer from the vehicle, ensure that the padlock is always fitted and locked.
- Remove padlock from draw bar, install conveyor on vehicle, reinstall padlock, attach chain .
- Attach lights cable from conveyor into vehicle.
- Test lights and indicators to ensure they are working.
- Ensure conveyor boom is in the lowest point and 2 spring latches are engaged into side holes on conveyor.
- Ensure 4 support legs are wound up in to highest point, turned horizontal and held in with spring latch.
- Ensure power cord wound up and fully secured for transportation.

ONSITE USE

- Ensure appropriate PPE worn.
- Back conveyor to desired point. The conveyor trailer must only be used on level ground.
- Wind down 4 support legs until conveyor level, balanced and fully supported.
- Remove draw bar padlock and lights cable, un hitch conveyor from vehicle.
- When in position, re-attach draw bar padlock, and use wheel lock to prevent theft.
- Unwind power chord. CHECK chord for any signs of damage. If damaged, have a registered electrician repair or replace the chord or contact Maccaferri for this to be arranged.
- Plug power cord in to secure single phase power source. **NOTE: it is your responsibility to ensure correct use of electrical safety equipment such as transformer or similar.**
- Release 2 spring tension levers on A frame.
- Ensure release handle on hydraulic ram tight.
- Use hydraulic ram handle to raise the conveyor to desired height.
- Release 2 spring tension levers on A frame, into desired hole on side of conveyor structure to lock boom safely in place. **Do not allow** spring levers to pass past the 9th rear hole on the conveyor.
- Ensure rear red emergency off button is turned outwards, otherwise conveyor will not start.
- Push green start button. Conveyor will run until either the rear red emergency stop button is pushed, or the red off button beside the green start button is pushed. **Never** try to move the conveyor, or raise or lower the boom while the conveyor is running.
- The red button at the rear of the conveyor is an emergency stop button only. Once this is pushed in, the conveyor will not run until button released.
- To turn the conveyor off, push the red off button beside the green start button.
- Remove the power cord from power source, wrap cord on to conveyor and secure for transportation.

- Release 2 spring latches holding A frame in position.
- Very slowly release the small handle on the hydraulic ram, allowing the boom to slowly lower to the transportation position.
- Release 2 spring latches in to the last hole, ensuring the pin is fully located through the structure.
- Wind up the 4 support legs and turn 90 degrees in to the locked position.
- Remove the wheel lock in to the travelling position, attach lock.
- Remove draw bar padlock, attach conveyor to vehicle, reattach lock.
- Undertake final transportation including the following :
 - Draw bar secure on vehicle and padlock attached, lights cable attached, safety chain attached.
 - Wheel lock is released and padlock attached.
 - Boom is in the lowered position and 2 spring latches are secured into last hole on conveyor structure.
 - Power cord is wound up correctly and tied off for transportation.
 - 4 wheel stabilisers are raised and in the locked in horizontal position.
 - Hydraulic ram small release lever is tight.

RULES OF USE

- **ALWAYS** wear appropriate PPE
- **ALWAYS** ensure the 4 wheel stabilisers are used correctly, and the conveyor is secure and level when in use
- **ALWAYS** use the padlocks on the wheel and draw bar to avoid theft, and safety chain attached
- **NEVER** travel with the conveyor boom not in the lowest position, and the spring levers must be secured in position
- **NEVER** raise the boom past the 9th rear hole on the conveyor structure
- **NEVER** try to fix the power cord or electrical components if damaged. A registered electrician only should fix
- **ALWAYS** ensure the vehicle is greased, and all parts checked in accordance with the maintenance plan
- **NEVER** touch the conveyor belt when in use
- **NEVER** adjust the boom height when the conveyor is in use
- **NEVER** move the conveyor when in use
- **NEVER** put your hands inside the grating within the rear hopper
- **ALWAYS** lock the release lever on the hydraulic ram when in the raised or lower position
- **ALWAYS** release the lever slowly on the hydraulic ram when lowering the boom