

GABION LIFTING FRAME VISUAL INSPECTION CONDITION REPORT

Customer : _____

CHECK : **OUT** Date : _____ **IN** Date : _____

STORE LOCATION : _____

Item #	Number of items	Item name	Checked OUT	Checked IN	Remarks
1	1	Steel frame			
2	6	Chains with hooks hanging off the ends of the arms			
3	2	Main chains hanging off the central beam			
4	10	Shackles and pins			
5	1	Steel ring			
6	1	Documentation (3 pages)			

Remarks :

Dear Customer :

- **On receipt of this equipment, please check all equipment has been received, ensure your site staff read and understand the operating, maintenance and safety information, and use the equipment in a safe manner.**
- **Responsibility for safe operation of the equipment, and safety of your staff is to your care.**
- **At the conclusion of the use of the equipment, please clean the equipment, repack it for transportation and return to Maccaferri.**
- **Please advise if there are any missing parts. All equipment usage to be in accordance with Maccaferri's Hire Agreement. You will be charged for any damaged or missing components.**

GABION LIFTING FRAME

WARNING !

Any alterations to this hire equipment may prove dangerous to the operator and will be in breach of the Equipment Hire Agreement

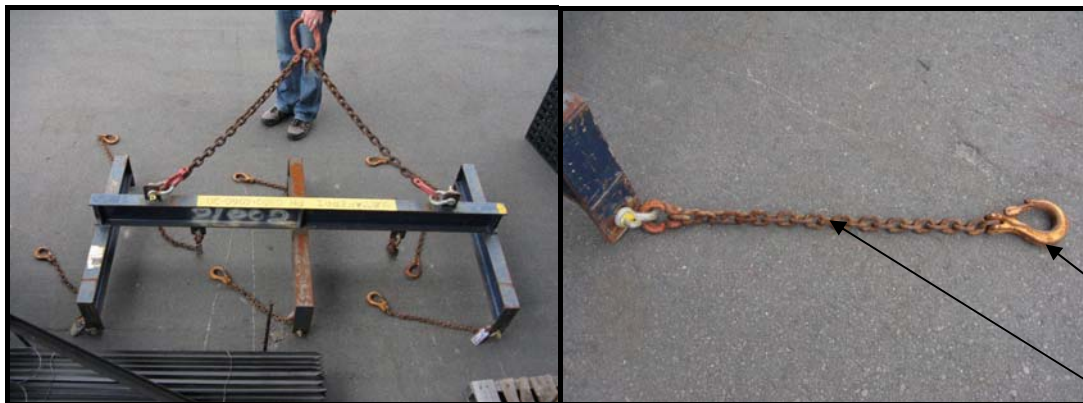
Service must be performed only by an authorised Maccaferri service organisation. Please contact Maccaferri (0800 60 60 20) for return of this equipment or servicing if it is found to be faulty.

***This documentation is also available on our website*
*www.maccaferri.co.nz***

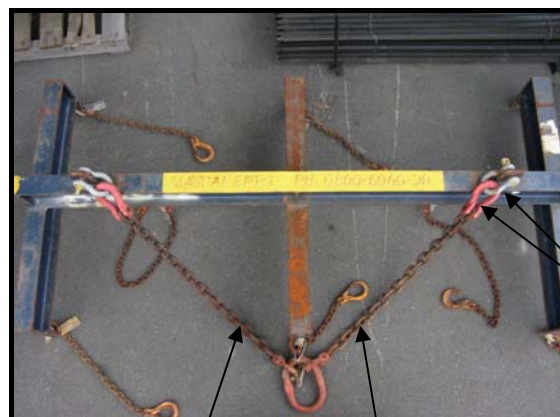
GABION LIFTING FRAME



Fully assembled
Gabion Lifting
frame



Chain and
hook



Shackles

Two main
chains with ring